

## TWO SEAS CANAL BY GRAVEL BIKE - FROM BORDEAUX TO AGDE, SÈTE OR MONTPELLIER

### Cycling holiday along Two Seas Canal (Canal des 2 Mers)

A legendary route through Southwest France, combining vineyards, gastronomy, and authentic villages. From smooth asphalt to shaded towpaths, gravel riding shows its full versatility all the way to the Mediterranean coast. Each day ends with the charm and warm welcome of our selected guesthouses.



8 days / 7 nights from €890

Self-guided cycling tour - Intermediate level

Custom trips available - contact us for details

*Depending on availability and the chosen range, the location of the accommodation may vary, as may the number of kilometres.*

### ITINERARY

#### DAY 1: VISIT BORDEAUX BY BIKE OR ON FOOT

##### Arrival in Bordeaux

Meet at our charming guesthouse, ideally located near Bordeaux's St Jean train station or the city center. Your host will be happy to offer recommendations for sightseeing, activities, and must-try restaurants. Your bike will be available from 7 p.m for an optional evening ride.

Dinner on your own and overnight stay in Bordeaux.

#### DAY 2: TWO SEAS CANAL FROM BORDEAUX TO FRONTENAC / COURPIAC

Distance cycled: 45-50km

You begin by following the Garonne River, where you can admire the beautiful facades of Bordeaux, the capital of the Gironde region. The landscapes alternate between wooded valleys, bastide towns, small château, and of course, the renowned Bordeaux vineyards !

Dinner on your own and overnight stay in Frontenac.

#### DAY 3: TWO SEAS CANAL FROM FRONTENAC / COURPIAC TO MAS D'AGENAI / MARMANDE

Distance cycled : 60km-72km

You start the day on charming, quiet country roads winding through the rolling vineyards and shaded woods typical of the Entre-deux-Mers region. Then, the atmosphere changes as you join the Canal de la Garonne - a peaceful setting perfect for gravel biking. The trail follows the canal, passing flower-lined locks, lively small ports, and majestic rows of plane trees, offering a smooth and relaxing route.

Dinner on your own and overnight stay in Mas d'Agenais.

#### DAY 4: TWO SEAS CANAL FROM MAS D'AGENAI / MARMANDE TO MOISSAC

Distance cycled : 87-95km

After leaving Le Mas d'Agenais or Marmande, you continue your gravel adventure along the peaceful banks of the Canal de la Garonne. The route unfolds like a tranquil ribbon lined with century-old plane trees, flower-adorned locks, and sleepy villages. The terrain is gentle, perfect for steady progress, while the scenery subtly changes along the way : fields, orchards, small ports, and woodland passages punctuate the day. Arrival in Moissac, a town of art and history on the banks of the Tarn, marks a beautiful end to the stage.

Dinner on your own and overnight stay in Moissac.

#### DAY 5: TWO SEAS CANAL FROM MOISSAC TO TOULOUSE

Distance cycled : 70-78km

From Moissac, the route follows the Tarn River before rejoining the Canal de la Garonne for a beautiful ride accross the Tarn-et-Garonne to the bustling city of Toulouse. The smooth, rolling path continues along tree-lined towpaths, dotted with charming engineering works, locks and quiet villages. The route alternates between shaded stretches and open views over the agricultural landscapes of the Southwest. As you approach Toulouse, the surroundings become more urban, but the greenway remains pleasant all the way into the heart of the Pink City.

Dinner on your own and overnight stay in Toulouse.

DAY 6: TWO SEAS CANAL FROM TOULOUSE TO CARCASSONNE

Distance cycled : 104km

You leave the Pink City following the Canal du Midi, a UNESCO World Heritage Site. Before long, the urban bustle fades away, giving way to a more peaceful atmosphere : between plane trees, stone bridges and history-laden locks, the route follows a green, shaded ribbon through the Lauragais countryside. The canal winds gently, passing typical villages and rolling landscapes, occasionally offering beautiful views of the distant Pyrenees. Your arrival in Carcassonne, with its iconic medieval ramparts as a backdrop, crowns a stage rich in atmosphere and heritage.

Dinner on your own and overnight stay in Carcassonne.

DAY 7: TWO SEAS CANAL FROM CARCASSONNE TO CAPESTANG

Distance cycled : 84-86km

Leaving the medieval city of Carcassonne, you continue your gravel journey along the towpaths of the Canal du Midi. This stage offers a peaceful and wild route, weaving between locks, canal bridges, and historic structures surrounded by lush vegetation. The path winds through the characteristic landscapes of the Aude region—vineyards, garrigue, and sun-drenched Languedoc villages. At times, the canal narrows and becomes more winding, creating a charming and ever-changing backdrop. You finally arrive in Capestang, with its port, impressive collegiate church, and warm canal-side atmosphere.

Dinner on your own and overnight stay in Capestang.

DAY 8: TWO SEAS CANAL FROM CAPESTANG TO SÈTE

Distance cycled : 72-74km

Final stretch toward the sea! From Capestang, you follow the Canal du Midi to its junction with the Étang de Thau. The route alternates between towpaths, endless vineyards, and open views of the Mediterranean landscape. The terrain remains gentle, and the atmosphere becomes increasingly bright and salty as you near the coast. After Agde, the Canal du Midi gives way to the Canal du Rhône à Sète: the scenery shifts, lined with lagoons, reeds, and sometimes even flamingos. Arriving in Sète—surrounded by sea, canals, and a vibrant port atmosphere—provides a beautiful conclusion to this long-distance journey.

Note: The tour ends upon your arrival in Sète if you choose the 8-day / 7-night option from Bordeaux to Sète.  
Optional extra night in Sète available.

--

Disclaimer

Depending on availability and the range chosen, the location of the accommodations may vary, as may the number of kilometers.

DATES & PRICES

We propose 2 ranges of accommodation for this stay:

Package	Double room 2 pers.	Twin room 2 pers.	Triple room 3 pers.	Single room 1 pers.
Comfort range				
From Bordeaux to Sète 8 days / 7 nights	€990	€1,050	€890	€1,490
Premium range				
From Bordeaux to Sète 8 days / 7 nights	€1,290	€1,350	€1,090	€1,990

NB: prices shown are per person.

Depending on availability at the time of your booking, a supplement may apply to certain services.

Stays at this price are available from **April 13 to October 15, 2025**.  
Outside this period, please contact us.

**For a stay between March 2 and April 12, 2025, or between October 16 and November 15, 2025:**

Low-season luggage transfer surcharge :

- For a group of 1 person: +€40/person/stage
- For a group of 2 people: +€40/person/stage
- For a group of 3 people: +€30/person/stage
- For a group of 4 people or more: +€20/person/stage

*Note: These surcharges are due to the fact that transfers are arranged privately for your group during the low season. For any other dates outside these periods, please contact us.*

**For last-minute bookings (less than 15 days before departure), additional transport/luggage transfer charges may apply depending on the number of participants and the number of stages in your trip.**

### OUR PRICE INCLUDES :

- 7 nights in charming guesthouses or hotels
- Daily breakfasts
- Luggages transfers (1 bag per person)
- 7-day-a-week telephone assistance
- Tourist taxes
- Booking fees
- Your digital roadbook (smartphone version)

### OUR PRICE DOES NOT INCLUDE :

- Bike rental (with delivery and return included, see below)
- Transfers from your home to the meeting point and return
- Parking for your vehicle during the tour
- Lunches and dinners
- Personal expenses and drinks
- Our bike insurance - [\[Click here for more information\]](#)
- Our [Europe Assistance insurance cancellation/interruption/assistance & repatriation](#)  
(6% of the total price, to be purchased at the time of booking)
- In general, anything not listed under "Our price includes"

## OPTIONS

### OPTIONS, SUPPLEMENTS AND REDUCTIONS:

COMFORT RANGE	
REDUCTIONS	
Discount: No luggage transfer	-€70
Discount: groups of more than 4 people	-€25
SUPPLEMENTS	
Supplement July / August	€40
Additional luggage per stage per person (1 day=1 stage)	€35
Early baggage delivery before 1 p.m (by transfer, excluding public holidays)	€150
EQUIPMENT HIRE	
Gravel bike rental (including delivery to the start and its collection) for the hole trip	€350
Extra hybrid Gravel bike rental day	€16
Extra waterproof rear bag (20L) for the whole trip	€15
Ortlieb Gravel-Pack Bikepacking rear bags	€45
Helmet	€10
SUPPLEMENTARY NIGHTS AT THE BEGINNING OR END OF YOUR TRIP	

Extra night in Bordeaux in double room (breakfast included) - B&B or hotel	€100
Extra night in Bordeaux in single room (breakfast included) - B&B or hotel	€190
Extra night in Bordeaux in triple room (breakfast included) - B&B or hotel	€70
Extra night in Agde in double room (breakfast included) - B&B or hotel	€90
Extra night in Sète in single room (breakfast included) - B&B or hotel	€130
Extra night in Sète in triple room (breakfast included) - B&B or hotel	€90
<b>OUR SUGGESTIONS DURING YOUR HOLIDAY</b>	
Extra night in Toulouse in B&B in double room (breakfast included)	€60
Extra night in Toulouse in B&B in single room (breakfast included)	€110
Extra night in Carcassonne in single room (breakfast included)	€110
Extra night in Toulouse in B&B in triple room (breakfast included)	€60
Extra night in Carcassonne in double room (breakfast included)	€60
Extra night in Carcassonne in triple room (breakfast included)	€60
Additional stopover in Saint-Émilion in single room (**hotel and luggage transfer included)	€200
Additional stopover in Saint-Émilion in double room (**hotel and luggage transfer included)	€150
Additional stopover in Saint-Émilion in triple room (**hotel and luggage transfer included)	€120
<b>PREMIUM RANGE</b>	
<b>REDUCTIONS</b>	
Discount: No luggage transfer	-€70
Discount: groups of more than 4 people	-€25
<b>SUPPLEMENTS</b>	
Supplement July / August	€60
Additional luggage per stage per person (1 day=1 stage)	€35
Early baggage delivery before 1 p.m (by transfer, excluding public holidays)	€150
<b>EQUIPMENT HIRE</b>	
Gravel bike rental (including delivery to the start and its collection) for the hole trip	€350
Extra hybrid Gravel bike rental day	€16
Extra waterproof rear bag (20L) for the whole trip	€15
Ortlieb Gravel-Pack Bikepacking rear bags	€45
Helmet	€10
<b>SUPPLEMENTARY NIGHTS AT THE BEGINNING OR END OF YOUR TRIP</b>	
Extra night in Bordeaux in double room (breakfast included) - B&B or hotel	€0
Extra night in Bordeaux in single room (breakfast included) - B&B or hotel	€0
Extra night in Bordeaux in triple room (breakfast included) - B&B or hotel	€0
Extra night in Agde in double room (breakfast included) - B&B or hotel	€0
Extra night in Sète in single room (breakfast included) - B&B or hotel	€0
Extra night in Sète in triple room (breakfast included) - B&B or hotel	€0
<b>OUR SUGGESTIONS DURING YOUR HOLIDAY</b>	
Extra night in Toulouse in B&B in double room (breakfast included)	€0
Extra night in Toulouse in B&B in single room (breakfast included)	€0
Extra night in Carcassonne in single room (breakfast included)	€0
Extra night in Toulouse in B&B in triple room (breakfast included)	€0
Extra night in Carcassonne in double room (breakfast included)	€0
Extra night in Carcassonne in triple room (breakfast included)	€0
Additional stopover in Saint-Émilion in single room (**hotel and luggage transfer included)	€0
Additional stopover in Saint-Émilion in double room (**hotel and luggage transfer included)	€0

Additional stopover in Saint-Émilion in triple room (**hotel and luggage transfer included)	€0
---	----

NB: prices are per person.

## HOSTS

### Comfort range

#### OUR PARTNER ACCOMMODATION IN BORDEAUX

Located in the heart of Bordeaux, this 3-star hotel combines charm, comfort, and accessibility. Just steps away from the riverfront, shops, and the must-see sights of the historic center, it offers an ideal starting point for exploring the city on foot or by bike. The elegantly decorated rooms provide a relaxing retreat after a day of sightseeing.



*Our partner accommodation in Bordeaux*

#### OUR GUESTHOUSE PARTNER IN FRONTENAC

Located in the charming village of Frontenac, just steps from the bike path, this bed and breakfast offers all the comfort you need for a peaceful night. The warm welcome makes it a perfect stopover in the heart of the Gironde countryside.



*Our guesthouse partner in Frontenac*

#### OUR GUESTHOUSE PARTNER IN LE MAS D'AGENAI

Our guest room in Mas-d'Agenais offers a peaceful and welcoming setting, ideal for relaxation. The place combines charm and simplicity, close to the Garonne Canal and the heart of the village.



*Our guesthouse partner in Le Mas d'Agenais*

#### OUR PARTNER ACCOMMODATION IN SÉRIGNAC

Nestled in the heart of a wooded park, Frédérique and Carine invite you to a peaceful and comfortable retreat. Between bucolic charm and a



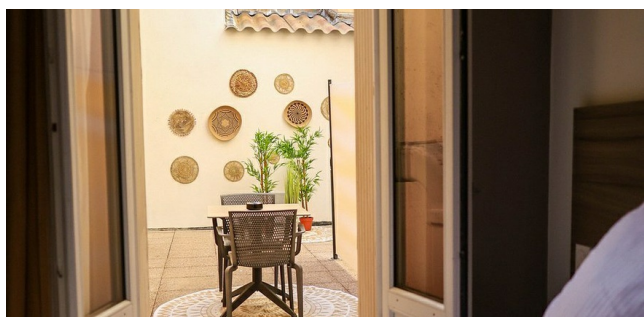
relaxed atmosphere, it's an ideal place to unwind while exploring the surroundings at your own pace.



*Our partner accommodation in Sérignac*

#### **OUR PARTNER ACCOMMODATION IN MOISSAC**

An ideal stop along the route, Moissac charms with its Romanesque abbey, remarkable cloister, and peaceful atmosphere by the Tarn. It's a perfect stop to combine cultural discovery and relaxation, with a comfortable hotel on site to extend the enjoyment.



*Our partner accommodation in Moissac*

#### **OUR PARTNER GUESTHOUSE IN TOULOUSE**

Our partner guesthouse in Toulouse is ideally located in a nice quiet area not far from the city center.

A warm welcome by our friend Olivier and the possibility to dine at his table d'hôtes (tasty local gastronomy).

The garden is an ideal haven of peace to enjoy your dinner and breakfast.

Economical parking (about 35€/week) in an economical secure parking lot located very close to your accommodation.

Your host Olivier :

Olivier particularly likes to make you discover our South West gastronomy. His kindness combined with his tasty cuisine based on local products is a great way to start your stay on the Canal du Midi by bike!



*Our partner guesthouse in Toulouse*

#### **OUR PARTNER ACCOMMODATION IN CASTELNAUDARY**

This guesthouse offers air-conditioned rooms with garden views, as well as an outdoor swimming pool. Enjoy outdoor activities such as hiking and cycling.



*Our partner accommodation in Castelnaudary*

#### **OUR PARTNER ACCOMMODATION IN CARCASSONNE**

The guesthouse is ideally located near the Medieval City of Carcassonne, just a few minutes' walk from the Château Comtal and the cathedral. It offers elegant rooms, a garden with an outdoor pool, and modern amenities such as a sun terrace and an on-site café. The location is perfect for exploring the city and its surroundings.



*Our partner accommodation in Carcassonne*

#### **OUR PARTNER GUEST HOUSE IN HOMPS**

Nestled in the heart of the charming village of Homps, just steps from the Canal du Midi, the Eloi Merle guesthouse is a former wine cellar full of character, surrounded by a large wooded garden.

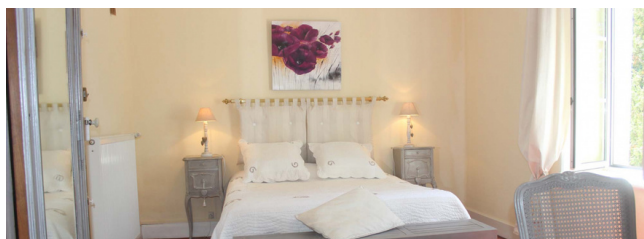
You will find spacious and comfortable rooms, a pleasant swimming pool to refresh yourself after your journey, and above all, a caring host passionate about his region.



*Our partner guest house in Homps*

#### **OUR PARTNER ACCOMMODATION IN CAPESTANG**

This charming accommodation offers a green setting with a swimming pool and spacious rooms. The village, rich in history, is ideally located for exploring the region and enjoying many outdoor activities.



*Our partner accommodation in Capestang*

#### **OUR PARTNER GUEST HOUSE IN AGDE**

Our host Janine will give you a warm and friendly welcome. Enjoy her exotic garden, and why not have a drink in the jacuzzi...





### OUR GUESTHOUSE PARTNER IN SÈTE

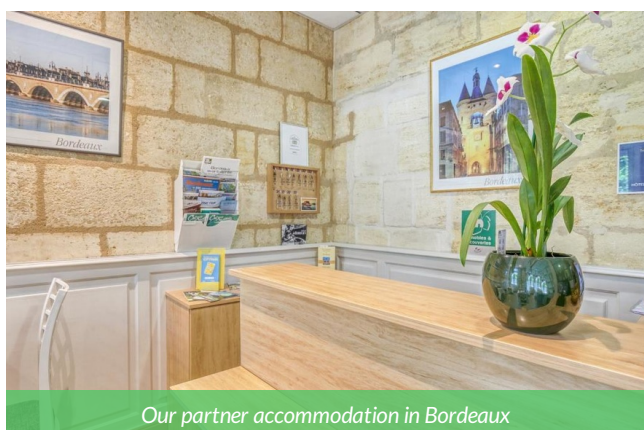
Discover this cosy guest house run by a small Italian family. You can relax in the peace and quiet of their outdoor courtyard, while remaining right in the center of Sète.



### Premium range

### OUR PARTNER ACCOMMODATION IN BORDEAUX

Located in the very heart of Bordeaux, this 3-star hotel combines charm, comfort, and accessibility. Just steps from the quays, shops, and must-see sites of the historic center, it offers an ideal starting point to explore the city on foot or by bike. The elegantly decorated rooms invite relaxation after a day of sightseeing.



### OUR PARTNER GUESTHOUSE IN SAUVETERRE DE GUYENNE

Come discover this cottage nestled in the heart of the countryside of Sauveterre-de-Guyenne, surrounded by nature and majestic tall trees. Ideal for a green getaway, it offers a peaceful and spacious setting, perfect for recharging with family or friends while enjoying the authentic charm of Entre-deux-Mers.



*Our partner guesthouse in Sauveterre de Guyenne*

#### OUR PARTNER ACCOMMODATION IN SÉRIGNAC

Enjoy the coolness and tranquility of a 17th-century residence. You will find a swimming pool, as well as a restaurant, a park, a tennis court, and a pool...



*Our partner accommodation in Sérignac*

#### OUR PARTNER HOTEL IN MOISSAC

Not far from the abbey of Moissac, this old house offers you a bright and comfortable place with its large garden and its superb swimming pool. Don't forget to reserve your table at the hotel's restaurant for a delicious meal.



*Our partner hotel in Moissac*

#### OUR PARTNER ACCOMMODATION IN TOULOUSE

This 3-star hotel is located in the heart of Toulouse, just steps from Matabiau train station and the Canal du Midi. It is only a 5-minute walk from Place du Capitole. The establishment offers comfortable rooms and features a restaurant with a friendly atmosphere, serving festive cuisine. Private parking is available.



*Our partner accommodation in Toulouse*

#### OUR PARTNER ACCOMMODATION IN CASTELNAUDARY

This historic guesthouse, built in 1774, is located in the heart of the city, close to the Canal du Midi. This majestic place stands out for its spacious rooms and welcoming atmosphere, ideal for those who wish to enjoy a calm and elegant setting. The building, a former private mansion, offers the chance to discover the charm of Castelnaudary, including its port and quays where visitors can stroll and enjoy local restaurants. The location also allows for exploring the town without the need for a car.



*Our partner accommodation in Castelnaudary*

#### OUR PARTNER HOTEL IN CARCASSONNE

Just 50 metres from the historic centre of Carcassonne in the Aude and its medieval fortress gates, this charming hotel will delight young and old alike. With its private swimming pool and peaceful rooms, you're guaranteed to have a great time!





*Our partner hotel in Carcassonne*

### OUR PARTNER GUEST HOUSE IN HOMPS

Not far from the Canal du Midi, this charming residence has all the ingredients to win you over: an exceptional old building, comfortable bedrooms, lush gardens... All with a friendly welcome. And don't forget to save a little time for a dip in the pool!



*Our partner guest house in Homs*

### OUR PARTNER GUEST HOUSE IN CAPESTANG

Our partner guest house in Capestang, in the heart of the vineyards and with a famous table d'hôtes.

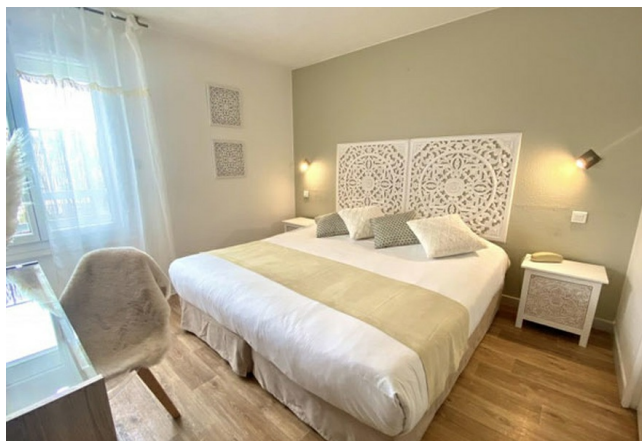


*Our partner guest house in Capestang*

### OUR PARTNER ACCOMMODATION IN AGDE

This 3-star hotel is located just 150 meters from Richelieu Beach in Cap d'Agde. It offers air-conditioned rooms and a peaceful setting with an outdoor pool, a wellness area (sauna, hammam), and a shaded terrace. Nearby, you can enjoy the marina, restaurants, shops, and attractions such as Aqualand and Luna Park — all within walking distance. The hotel is also well situated for exploring the region, with cycling paths and sites like the Canal du Midi close by.

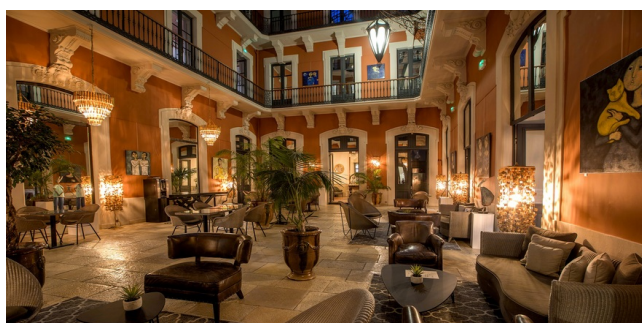




Our partner accommodation in Agde

## OUR PARTNER HOTEL IN SÈTE

A charming hotel in the heart of Sète, offering a warm welcome in a 19th-century building. Close to the canals, the peacefulness of the glass-roofed patio is sure to delight. You can also enjoy a gourmet break in their restaurant, where you can sample delicious Mediterranean cuisine "between land and sea".



Our partner hotel in Sète

Categories :

*Essential : a selection of simple guest houses and 1\* hotels.*

*Confort : a selection of comfortable guest houses and 2-star hotels.*

*Privilege : a selection of charming guest houses and 3\* hotels.*

*NB : these are our preferred accommodations.*

*Depending on your registration date, we may be able to reserve other accommodation of the same category for you.*

## PRACTICAL INFO

### A WORD FROM GUILHEM, YOUR LOCAL CYCLING GUIDE

The Canal Latéral de la Garonne from Bordeaux to Toulouse is fully paved with a beautiful cycle path. The Canal du Midi from Toulouse to Sète begins with a nice paved section. For the remaining 200 km to Agde, however, you will find only dirt paths (with roots and frequent uneven terrain).

That's why we've selected gravel bikes for your comfort: lightweight frames, Shimano 11-speed single chainring transmissions, hydraulic disc brakes, Ortlieb bikepacking bags, lighting systems...

### FRENCH BRAND GRAVEL BIKE SUNN:



#### EQUIPMENT INCLUDED :

- Waterproof Ortlieb rear bag
- Waterproof Ortlieb handlebar bag
- Front & rear lights
- Bike lock
- Repair kit

#### EQUIPMENT NOT INCLUDED :

- Helmet (available for 10€ upon request - please request it at the time of booking)
- SPD pedals

#### THEFT & BREAKDOWN INSURANCE - NATURE OCCITANE COVER YOU

In case of an incident along the way (theft or breakage not due to normal wear), we insure all your equipment for only:

- €2 per day per bike and/or piece of equipment
- €3 per day per electric bike or gravel bike

In case of theft of the bike or equipment :

##### **Without insurance**

- Gravel touring bike (Sunn) : €1712
- Full repair cost in case of damage

##### **With insurance**

- Gravel touring bike (Sunn) : €171
- 10% of the repair cost in case of damage

*Note : A theft report from the police must be provided to Nature Occitane within 48 hours of the incident in both cases.*

#### In case of theft or loss of accessories :

Rear bag: €50

Bike lock: €75

Multi-tool or pump: €15

Helmet: €50

Full bikepacking kit (3 bags): €300 (or €100 per bag)

## PARKING YOUR VEHICLE DURING YOUR TRIP

For environmental reasons, we strongly encourage you to arrive and depart using public transportation.

#### In Bordeaux

For added security, we can recommend a secure, affordable parking lot located near our partner guesthouse in Bordeaux. [Click here](#) to calculate the price or to book your spot

#### **Meeting point**

Day 1 at your accommodation.

#### **End of your trip**

Your tour ends upon arrival in Sète.

#### **How to get there ?**

To limit your CO2 emissions, we encourage you to use public transportation. We will arrange return transport for your bike from the end of your journey.

→ BY TRAIN: SNCF train stations in Bordeaux or Sète.

→ BY PLANE: Airports in Bordeaux or Montpellier.

## RECOMMEND GEAR

Bring a travel bag or suitcase for your weekly clothes.

This will be transported by vehicle and delivered each evening to your accommodation.

#### Clothing :

- 1 sun hat or cap (helmet available upon request at booking)
- 1 light scarf or neck warmer
- Breathable t-shirts (avoid cotton, which dries slowly; prefer quick-dry short-sleeved shirts)
- 1 fleece
- 1 Gore-Tex-style jacket (waterproof and breathable)
- 2 padded cycling shorts (short or long) for better comfort

**NB: Cycling shorts are worn directly on the skin.**

- 1 comfortable pair of trousers for the evening
- Underwear
- Socks (avoid cotton tennis socks – they dry slowly)
- 1 swimsuit for the pool or the sea at the end of your trip

#### Shoes :

- 1 pair of multi-sport shoes for cycling and walking
- Trainers or sandals for evenings

#### Gear :

- Sunglasses
- Pocket knife (must be packed in checked luggage if flying)
- Toiletries
- Toilet paper
- Sunscreen
- Anti-chafing cream

**This list should be adjusted depending on the season.**